

Direct acting

Type PLG41 Pressure Reducing Valves

For gas

- For low pressure use of PPD41L-2 pressure reducing valve.
- A valve disc made of synthetic rubber prevents seat leakage.
- Use PLG61-2 pressure reducing valve for large flow rate.



1 Pressure Reducing Valves (For gas)

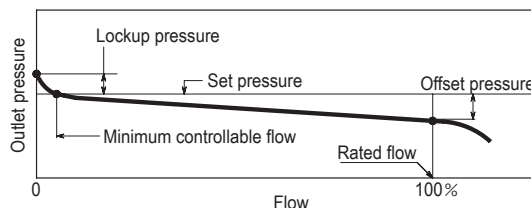
Specifications

Fluid	Size	Pressure (kPa)			Max. Temp. (°C)	Material for main parts					Connection
		Inlet	Outlet set range			Body	Bottom cover	Spring case	Valve disc	Diaphragm	
Air & non-corrosive gases	20 · 25	2.3 400	#1	0.3-1.0	0 80	Stainless cast steel	Stainless steel	Aluminium alloy casting	Stainless steel & synthetic rubber	Synthetic rubber	Screwed JIS Rc
			#2	0.8-5.0							
			#3	2.0-10							
			#4	6.0-20							
			#5	15-35							
										Flanged JIS10KFF	

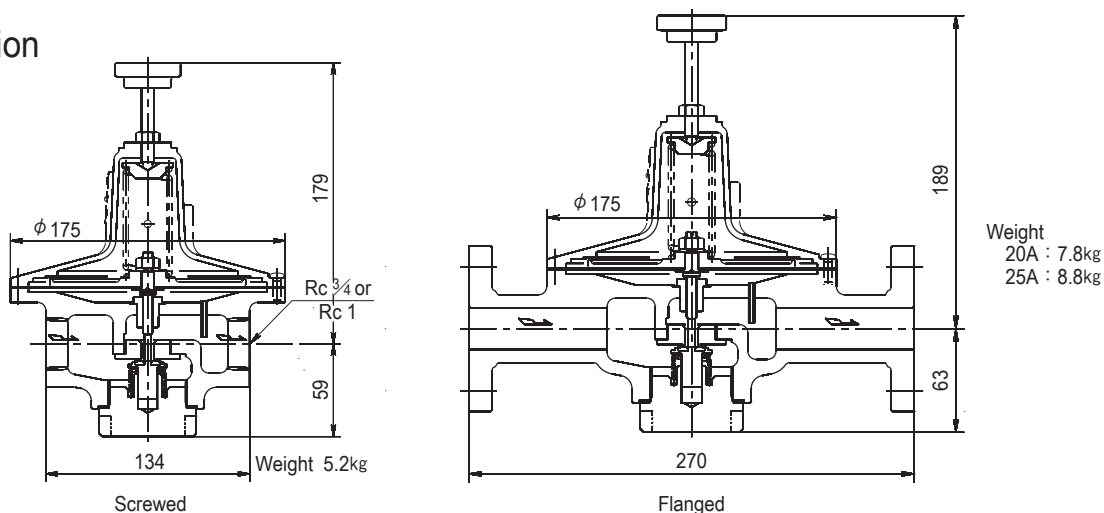
Performance

Min. differential pressure	2kPa	
Offset pressure	Approx. 15% of max. set pressure (min. 0.4kPa) or less	
Lockup Pressure	Approx. 0.4kPa	
Min. controllable flow (air)	Approx. 0.3m ³ /h (normal)	
Seat leakage	Nil	
Cv	1 (#1, 2) 2 (#3, 4, 5)	
Max. flow	Set press. #1, 2	20m ³ /h (normal)
	Set press. #3, 4, 5	30m ³ /h (normal)

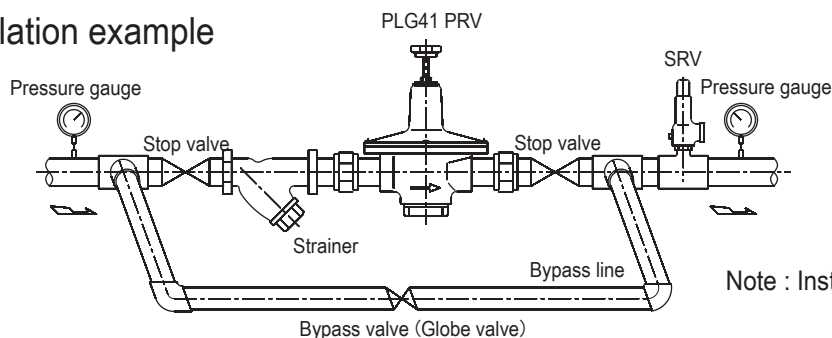
Flow characteristic curve



Construction



Installation example



Note : Install upright in horizontal piping.